



**#IAmABiologist** studying the **brain circuitry** involved in responses to a predator and how this response and circuitry are **shaped and modulated** by past experiences, current feelings, and knowledge of the environment.

**Nicole Vissers**  
PhD Student, Hofer Lab

**Biology**  
**Week 2022**

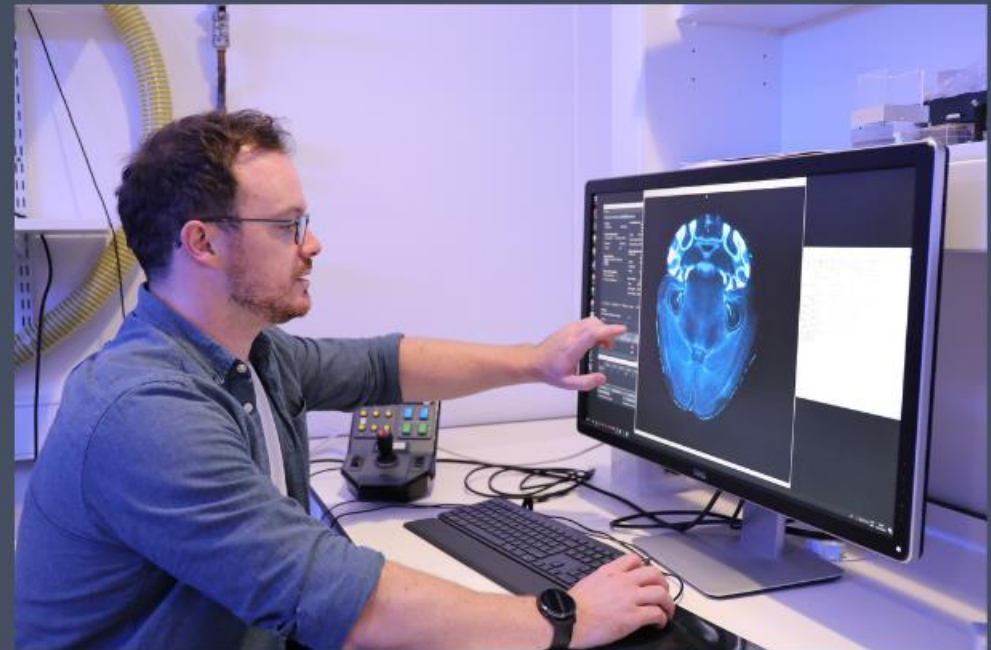
|||||  
Sainsbury Wellcome Centre

**#IAmABiologist**  
developing new ways of  
looking at the brain and  
seeing things that haven't  
been seen before. I  
mainly do this by **making  
brains transparent**, might  
be science, might be  
magic, I still can't tell.

**Peter Gordon**  
Microscopy Specialist

**Biology**  
Week 2022

  
Sainsbury Wellcome Centre





**#IAmABiologist** assisting research scientists by processing and preparing tissue specimens and cells for microscopic examination and analysis. The process of **basic science** leads to healthcare support.



**Jessica Broni-Tabi**  
Histology Research Scientist



**#IAmABiologist**  
studying **Fiddler crab**  
nervous systems to  
understand how  
organisms perform  
**spatial computations**,  
such as distance  
estimations between  
objects and path  
integration.

**Benjamin Grainger and  
Sanna Titus**

PhD Student and Research Assistant

**UK  
Biology  
Week 2022**



Sainsbury Wellcome Centre

**#IAmABiologist**  
evaluating spatial  
**navigation** across the  
phylogenetic tree,  
which includes  
tracking **jewel wasp**  
trajectories.

**Lewis Rowden and  
Sanna Titus**

PhD Student and Research Assistant  
at SWC and ZSL London Zoo

**Biology**  
Week 2022

|||||  
Sainsbury Wellcome Centre

